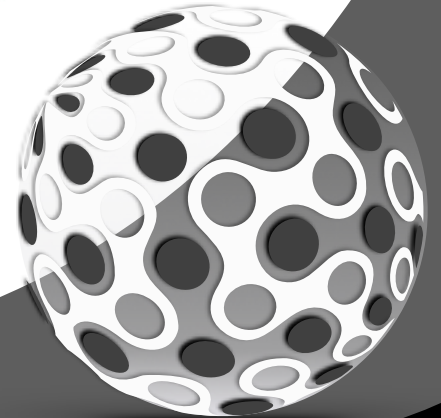


HORN

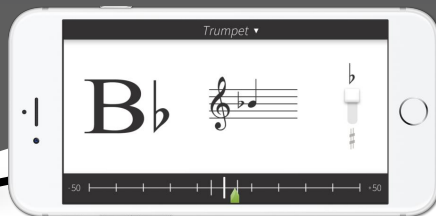
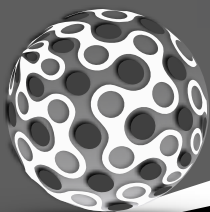
BEGINNING BAND MUSIC BOOK

NAME _____



PART 1

BANDMATE CHROMATIC TUNER
FREE DOWNLOAD!



FREE APP FOR APPLE & ANDROID
www.BandmateTuner.com

BAND KARATE BELT SYSTEM

COMPLETE THE PASS-OFFS & EARN YOUR BELT!

SILVER BELT

#53 Bb Scale | Rhythms 33-40 | #47 "Mary" | #50 "Laughing"

BLACK BELT - ALMOST THERE!

↑6↓6 | Rhythms 25-32 | #42 "Saints" | #45 "Ode"

GREEN BELT

↑5↓5 | Rhythms 17-24 | #35 "Frere" | #39 "Old Mac"

RED BELT - HALFWAY POINT!

16sec. Longtone | ↑4↓4 | Rhythms #9-16 | #27 "Aura" | #32 "Donkey"

PURPLE BELT

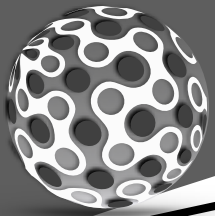
↑3↓3 Notes | Rhythms 9-16 | #19 "Miss Mary" | #23 "Jim Along"

BLUE BELT

12sec. Longtone | Rhythms 5-8 | #14 "Hot Crossed" | #18 "Mary Had"

WHITE BELT

8sec. Longtone | Rhythms 1-4 | #11 "Starlite" | #12 "Rumba"



RHYTHM STUDIES - 1

1 $\frac{4}{4}$

2 $\frac{4}{4}$

3 $\frac{4}{4}$

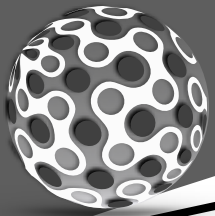
4 $\frac{4}{4}$

5 $\frac{4}{4}$

6 $\frac{4}{4}$

7 $\frac{4}{4}$

8 $\frac{4}{4}$



RHYTHM STUDIES - 2

9 $\frac{4}{4}$

10 $\frac{4}{4}$

11 $\frac{4}{4}$

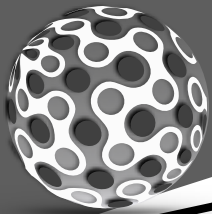
12 $\frac{4}{4}$

13 $\frac{4}{4}$

14 $\frac{4}{4}$

15 $\frac{4}{4}$

16 $\frac{4}{4}$



RHYTHM STUDIES - 3

17 $\frac{4}{4}$

18 $\frac{4}{4}$

19 $\frac{4}{4}$

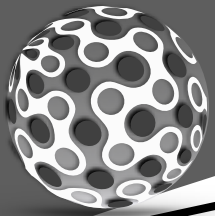
20 $\frac{4}{4}$

21 $\frac{4}{4}$

22 $\frac{4}{4}$

23 $\frac{4}{4}$

24 $\frac{4}{4}$



RHYTHM STUDIES - 4

25 $\frac{4}{4}$

26 $\frac{4}{4}$

27 $\frac{4}{4}$

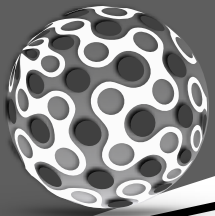
28 $\frac{4}{4}$

29 $\frac{4}{4}$

30 $\frac{4}{4}$

31 $\frac{4}{4}$

32 $\frac{4}{4}$



RHYTHM STUDIES - 5

33 $\frac{4}{4}$

34 $\frac{4}{4}$

35 $\frac{4}{4}$

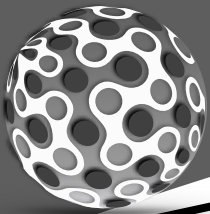
36 $\frac{4}{4}$

37 $\frac{4}{4}$

38 $\frac{4}{4}$

39 $\frac{4}{4}$

40 $\frac{4}{4}$



BEGINNING BAND 1ST NOTES

C
(CONCERT F)

T ○ ○ ○ ○

Bb
(CONCERT Eb)

T ● ○ ○ ○

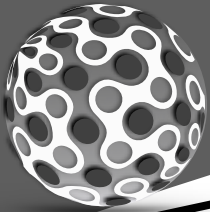
A
(CONCERT D)

T ● ● ○ ○

1 THE FIRST NOTE

2 A HAIR LOWER

3 WHICH NOTE IS IT?



BEGINNING BAND 1ST NOTES

4 3RD NOTE DOWN

Musical notation for exercise 4, showing two staves in 4/4 time. The first staff starts with a treble clef and a key signature of one sharp (F#). The first note is A4 (middle C), followed by a whole rest. The second staff starts with a treble clef and a key signature of one flat (Bb). The first note is Bb4, followed by a whole rest. The exercise is 4 measures long.

5 DOWN & UP

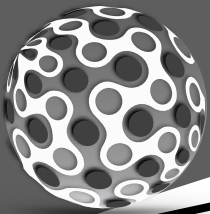
Musical notation for exercise 5, showing two staves in 4/4 time. The first staff starts with a treble clef and a key signature of one sharp (F#). The first note is A4, followed by a whole rest, then a Bb4 (indicated by a flat sign), followed by a whole rest. The second staff starts with a treble clef and a key signature of one flat (Bb). The first note is Bb4, followed by a whole rest, then an A4, followed by a whole rest. The exercise is 4 measures long.

6 DOUBLE UP

Musical notation for exercise 6, showing two staves in 4/4 time. The first staff starts with a treble clef and a key signature of one sharp (F#). The first note is A4, followed by a Bb4 (indicated by a flat sign), then a whole rest, then an A4. The second staff starts with a treble clef and a key signature of one flat (Bb). The first note is Bb4, followed by a whole rest, then an A4, then a Bb4. The exercise is 4 measures long.

7 3 IN THE MIX

Musical notation for exercise 7, showing two staves in 4/4 time. The first staff starts with a treble clef and a key signature of one sharp (F#). The first note is A4, followed by a B4, then a Bb4 (indicated by a flat sign), followed by a whole rest. The second staff starts with a treble clef and a key signature of one flat (Bb). The first note is Bb4, followed by an A4, then a Bb4, followed by a whole rest. The exercise is 4 measures long.



BEGINNING BAND 1ST NOTES

C
(CONCERT F)

T ○ ○ ○ ○

Bb
(CONCERT Eb)

T ● ○ ○ ○

A
(CONCERT D)

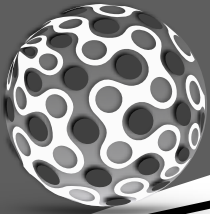
T ● ● ○ ○

8

QUARTER ATTACK

9

DUET DUEL

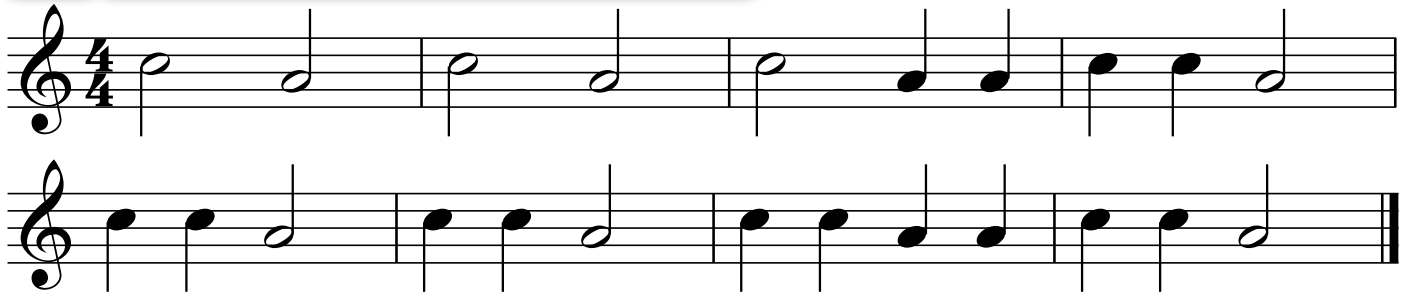


BEGINNING BAND 1ST NOTES

10 RAIN RAIN, GO AWAY

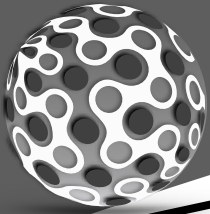


11 STAR-LITE, STAR-BRITE



12 3 NOTE RUMBA





BEGINNING BAND NEXT 2 NOTES

A
(CONCERT D)

T ● ● ○

G
(CONCERT C)

○ ○ ○

F
(CONCERT Bb)

● ○ ○

13 TWO NOTES LOWER

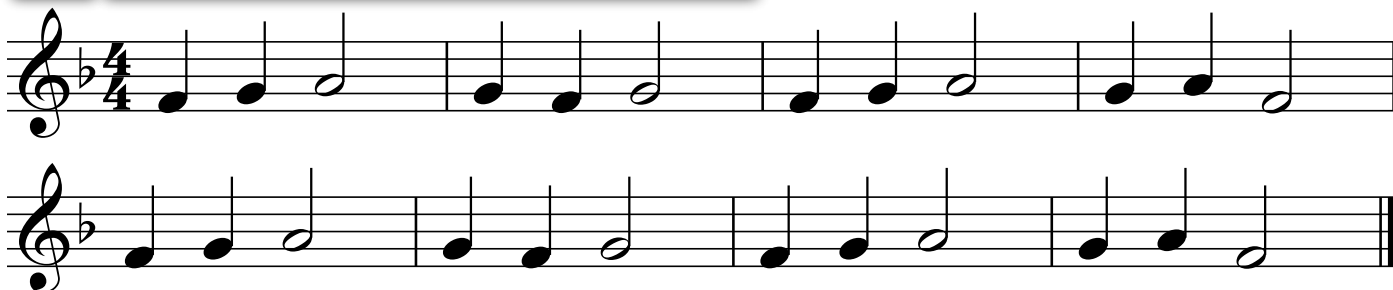
14 HOT CROSSED BUNS

15 AU CLARE DE LA LUNE



BEGINNING BAND NEXT 2 NOTES

16 GENTLY SLEEP



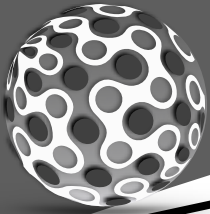
17 DOWN BY THE STATION



18 MARY HAD A LITTLE LAMB



THIS IS WHY WE
CLEAN OUR HORNS!!!

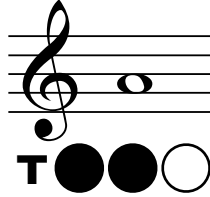


BEGINNING BAND 4 NOTE SONGS

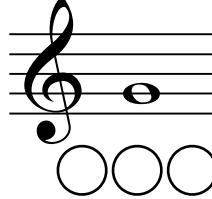
Bb
(CONCERT Eb)



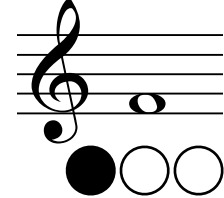
A
(CONCERT D)



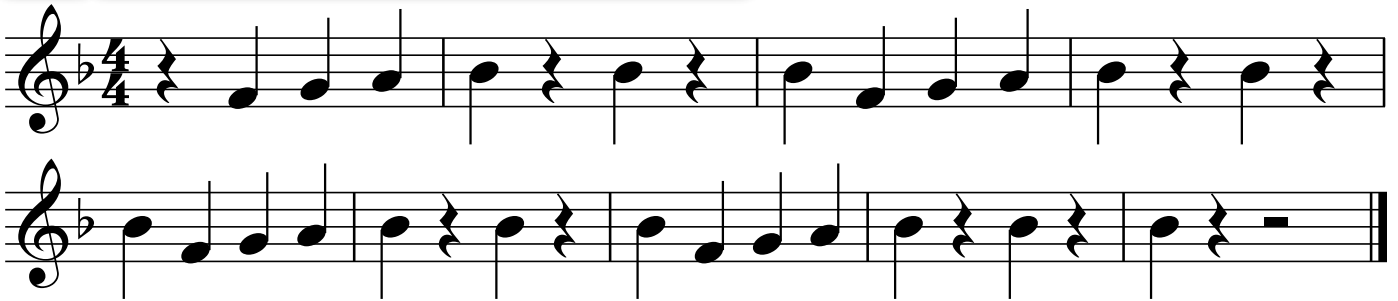
G
(CONCERT C)



F
(CONCERT Bb)



19 MISS MARY MACK



20 PEPPERONI PIZZA



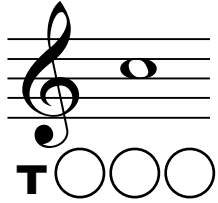
21 NORWEGIAN FOLK SONG



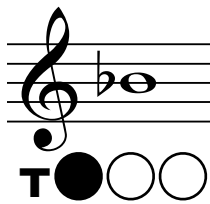


BEGINNING BAND STRIVE FOR FIVE

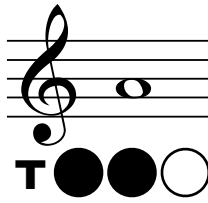
C
(CONCERT F)



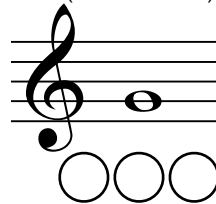
Bb
(CONCERT Eb)



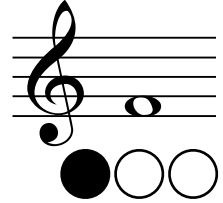
A
(CONCERT D)



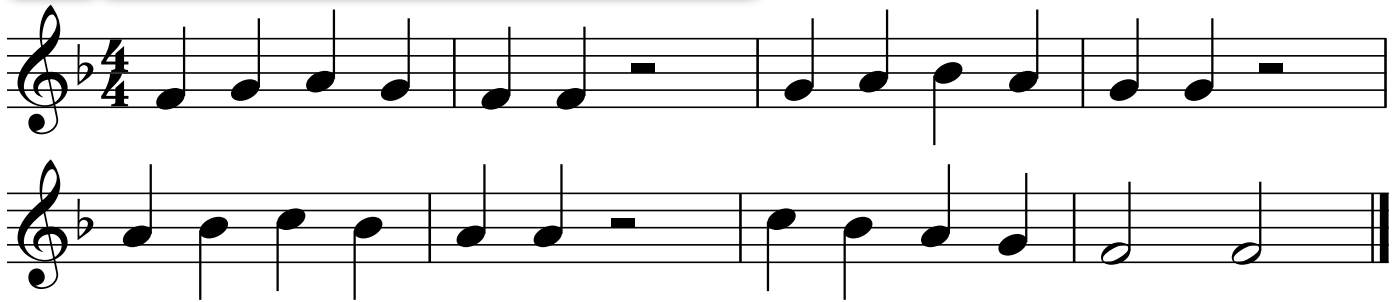
G
(CONCERT C)



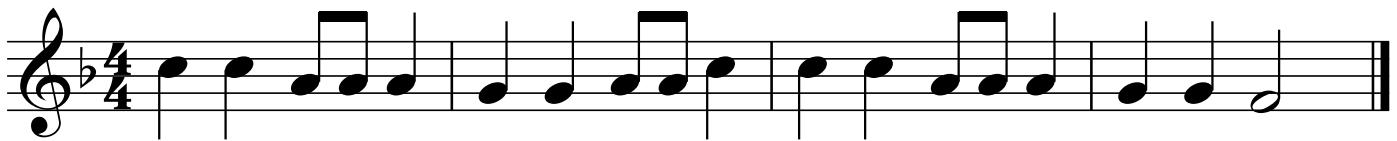
F
(CONCERT Bb)



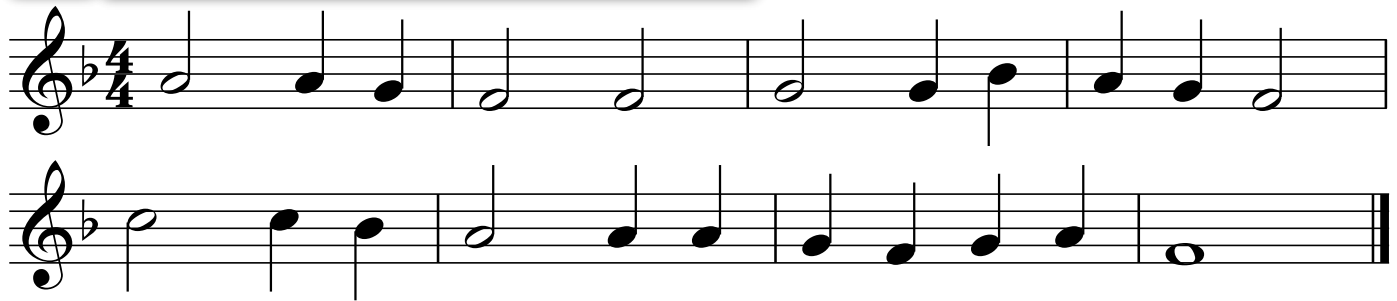
22 FIVE NOTE PATTERN

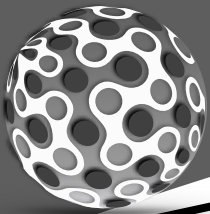


23 JIM ALONG JOSIE



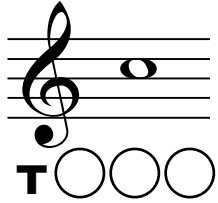
24 GO TELL AUNT RHODIE



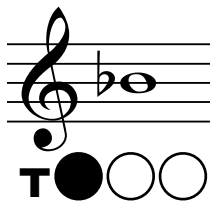


BEGINNING BAND STRIVE FOR FIVE

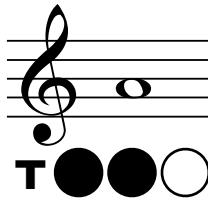
C
(CONCERT F)



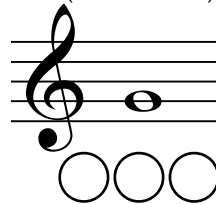
Bb
(CONCERT Eb)



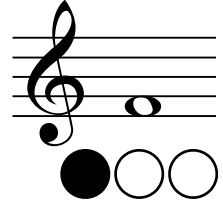
A
(CONCERT D)



G
(CONCERT C)



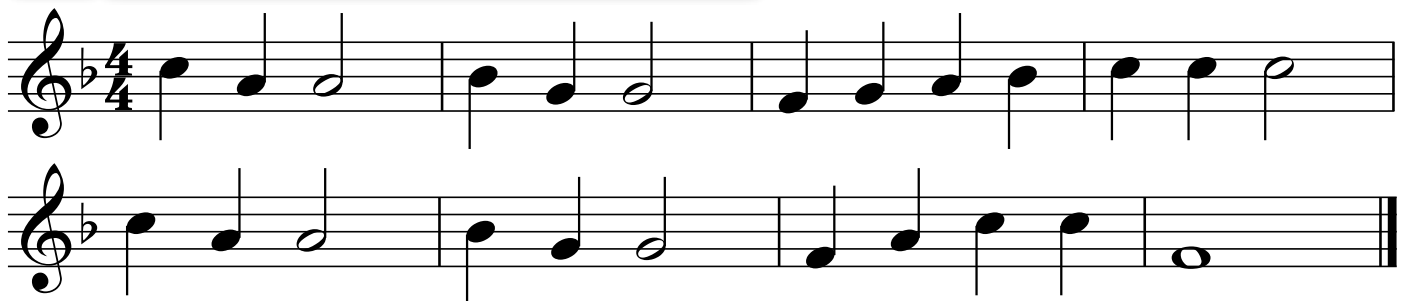
F
(CONCERT Bb)



25 MERRILY WE ROLL ALONG



26 LIGHTLY ROW



27 AURA LEE





28 JINGLE BELLS

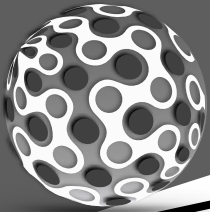
Musical notation for 'Jingle Bells' in 4/4 time, featuring four staves of music in a single system. The key signature has one flat (B-flat). The melody is written on the top staff, and the accompaniment is written on the three lower staves. The piece concludes with a double bar line.

29 REST STOP

Musical notation for 'Rest Stop' in 4/4 time, featuring two staves of music in a single system. The key signature has one flat (B-flat). The melody is written on the top staff, and the accompaniment is written on the bottom staff. The piece concludes with a double bar line.

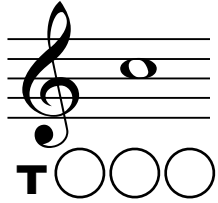
30 DREYDL DREYDL

Musical notation for 'Dreydl Dreydl' in 4/4 time, featuring two staves of music in a single system. The key signature has one flat (B-flat). The melody is written on the top staff, and the accompaniment is written on the bottom staff. The piece concludes with a double bar line.

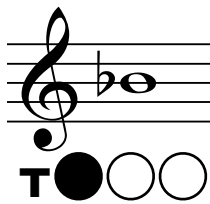


BEGINNING BAND STRIVE FOR FIVE

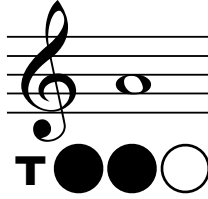
C
(CONCERT F)



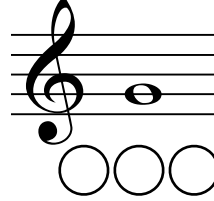
Bb
(CONCERT Eb)



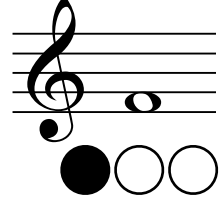
A
(CONCERT D)



G
(CONCERT C)



F
(CONCERT Bb)



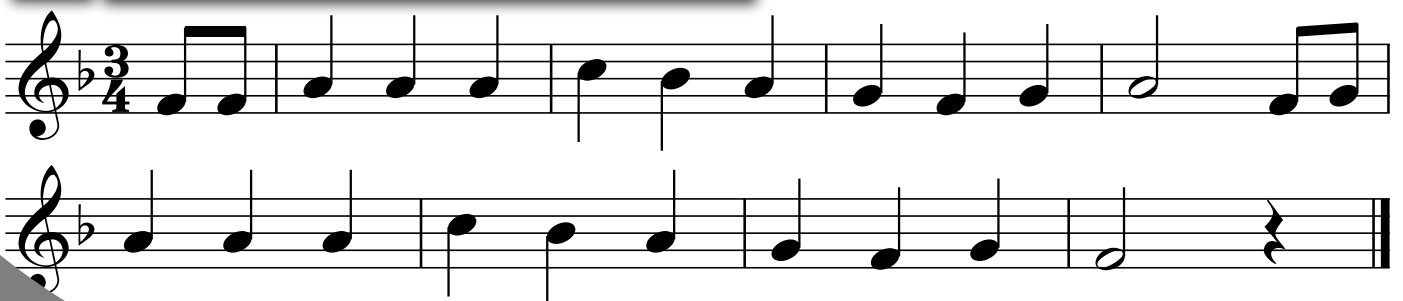
31 GOOD KING WENCESLAS



32 DONKEY ROUND



33 LITTLE FISH





BEGINNING BAND ADD 6 TO THE MIX

D
(CONCERT G)

C
(CONCERT F)

Bb
(CONCERT Eb)

A
(CONCERT D)

G
(CONCERT C)

F
(CONCERT Bb)

34 LONDON BRIDGE

35 FRERE JACQUES

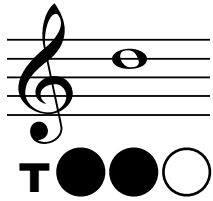
36 MORNING FROM PEER GYNT



BEGINNING BAND ADD 6 TO THE MIX

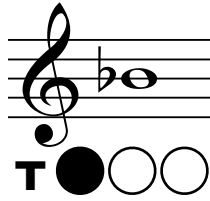
D

(CONCERT G)



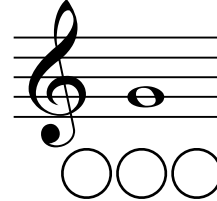
Bb

(CONCERT Eb)



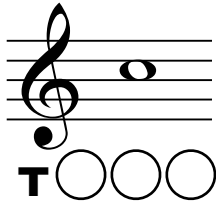
G

(CONCERT C)



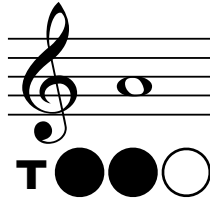
C

(CONCERT F)



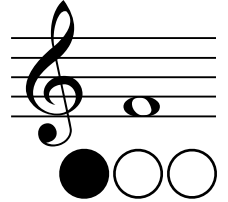
A

(CONCERT D)



F

(CONCERT Bb)



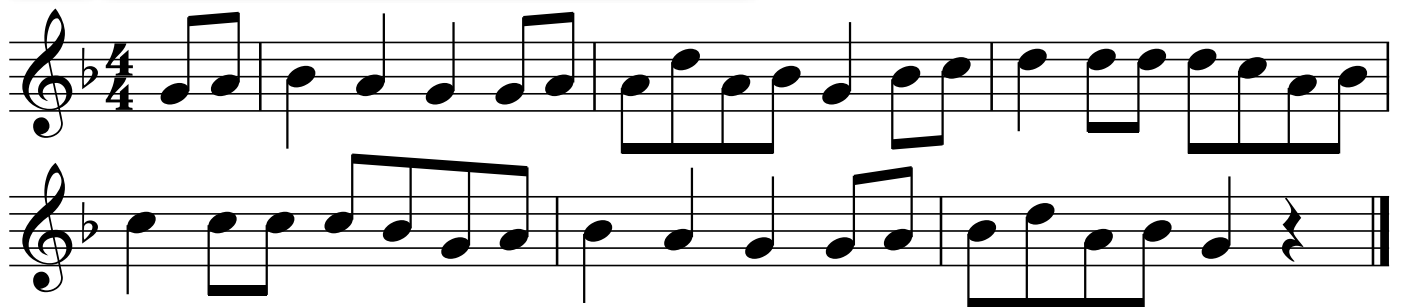
37

THIS OLD MAN



38

THE SNAKE CHARMER



39

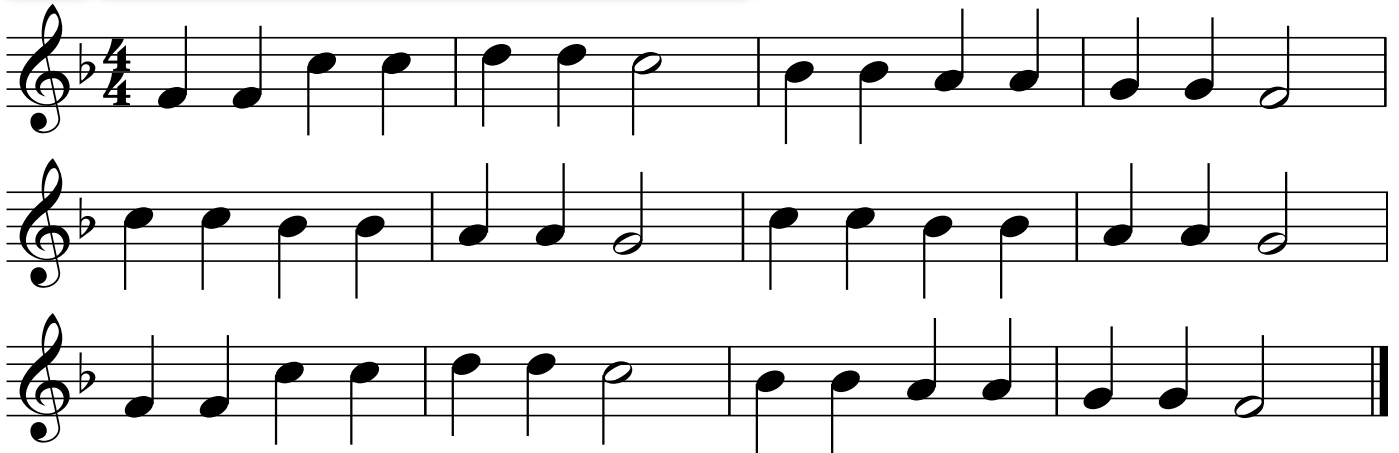
OLD MAC DONALD



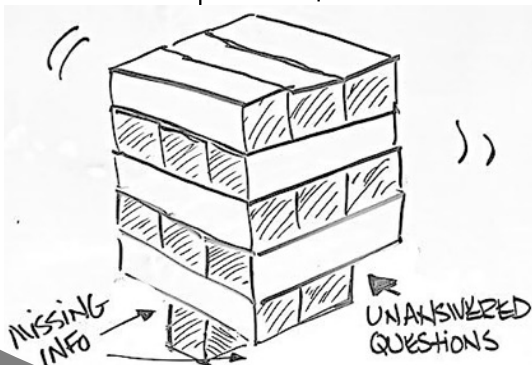
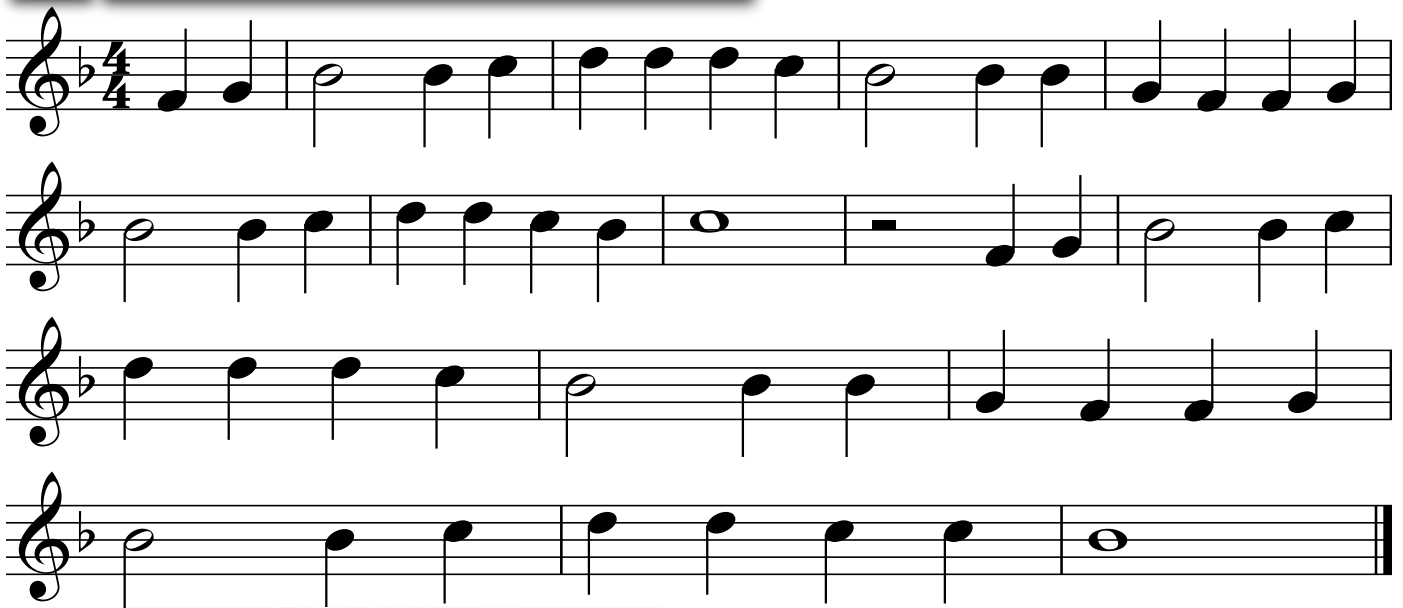


BEGINNING BAND ADD 6 TO THE MIX

40 TWINKLE TWINKLE LITTLE STAR



41 PEACE LIKE A RIVER



YOU CAN'T BUILD A
BAND WITH MISSING
PIECES...
IT WILL FALL OVER.



BEGINNING BAND ADD 6 TO THE MIX

D
(CONCERT G)

T ● ● ○

C
(CONCERT F)

T ○ ○ ○

Bb
(CONCERT Eb)

T ● ○ ○

A
(CONCERT D)

T ● ● ○

G
(CONCERT C)

○ ○ ○

F
(CONCERT Bb)

● ○ ○

42 SAINTS GO MARCHING IN

1. 2.


43 TWINKLE WITH A D.C. AL FINE


Fine
D.C. al Fine



BEGINNING BAND ADD 6 TO THE MIX

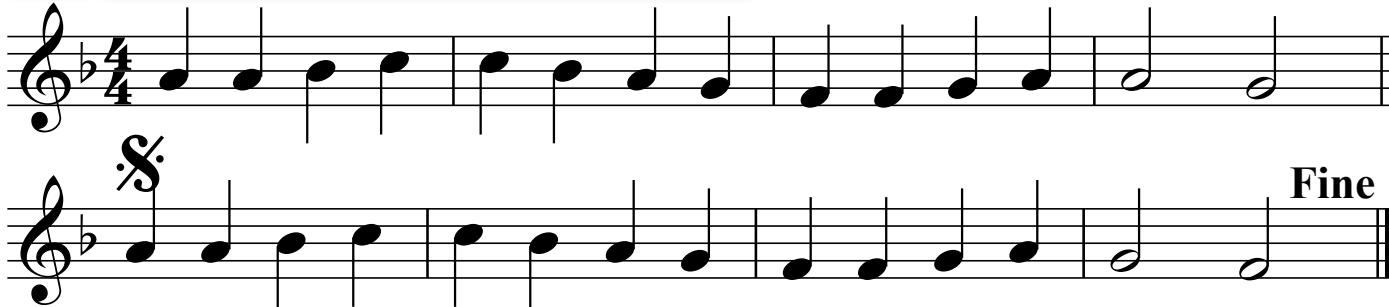
44 LONDON BRIDGE D.C. AL CODA

To Coda  D.C. al Coda



Coda

45 ODE TO JOY



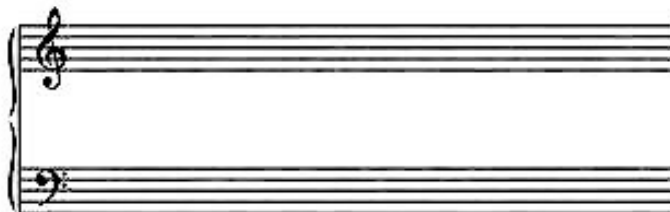
Fine

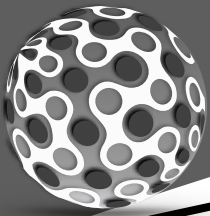
D.S. al Fine

THE SOUND OF SILENCE

Larghissimo

J. S. Zamecnik





BEGINNING BAND 1 MORE BELOW

C (CONCERT F)

Bb (CONCERT Eb)

A (CONCERT D)

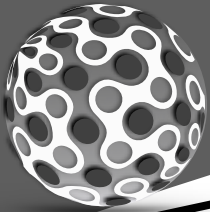
G (CONCERT C)

F (CONCERT Bb)

E (CONCERT A)

46 DOWN ONE MORE

47 MARY ANN



48 POLLY WOLLY DOODLE



49 SHOO, FLY

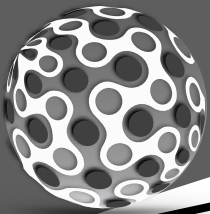


50 LAUGHING SONG



51 7 NOTE PATTERN

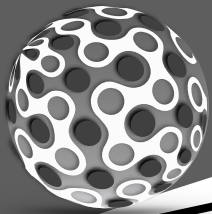




52 FOUR PART LITTLE STAR

First system of four-part musical notation for 'Little Star'. It consists of four staves labeled A, B, C, and D. Each staff begins with a treble clef, a key signature of one flat (Bb), and a time signature of 2/4. The music is written in a four-part setting, with each part having a unique melodic line. The notes are primarily quarter and eighth notes, with some rests.

Second system of four-part musical notation for 'Little Star', identical to the first system. It consists of four staves labeled A, B, C, and D. Each staff begins with a treble clef, a key signature of one flat (Bb), and a time signature of 2/4. The music is written in a four-part setting, with each part having a unique melodic line. The notes are primarily quarter and eighth notes, with some rests.



BEGINNING BAND 4 PART SONGS

A

B

C

D

A

B

C

D



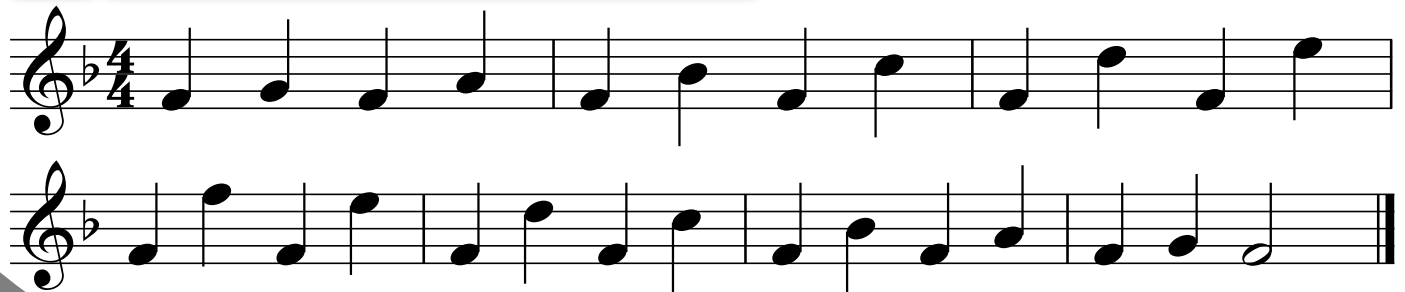
53 Bb SCALE

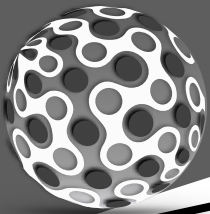


54 Bb SEQUENCE



55 Bb ELEVATOR





INSTRUMENT FINGERING CHART



F
(CONCERT Bb)

T ○ ○ ○

E
(CONCERT A)

T ○ ● ○

D
(CONCERT G)

T ● ● ○

C
(CONCERT F)

T ○ ○ ○

Bb
(CONCERT Eb)

T ● ○ ○

E
(CONCERT A)

○ ○ ○

F
(CONCERT Bb)

● ○ ○

G
(CONCERT C)

○ ○ ○

A
(CONCERT D)

T ● ● ○

GO ONLINE TO WATCH PERFORMANCES

FLUTE

Nina Perlove
Hubert Laws
Dave Valentin
James Galway
Greg Pattillo
Julius Baker
Robert Aitken
Jean-Pierre Rampal
Jeanne Baxtresser
Benny Goodman
Artie Shaw
Woody Herman
Buddy DeFranco
Pete Fountain
David Shifrin
Richard Stoltzman
Julian Bliss
Larry Combs
Stanley Drucker
Thea King
Mitchell Lurie

CLARINET

Branford Marsalis
John Coltrane
Ben Webster
"Fathead" Newman
Harry Carney
Gerry Mulligan
Dana Colley
Ronnie Cuber
Hermann Baumann
Dennis Brain
Dale Clevenger
Philip Farkas
Barry Tuckwell

BARISAX



Joseph Alessi
Wycliffe Gordon
Christian Lindberg
Slide Hampton
Delfeayo Marsalis
Rubin Eubanks
Christian Lindberg
Ralph Sauer

HORN

Steven Mead
Loren Marsteller
Rich Matteson
Brian Bowman
Leonard Falcone

BARITONE

FAMOUS INSTRUMENTALISTS

Tommy Johnson
Roger Bobo
Jim Self
Doug Tournoquist
Sam Pfaffian
Dan Peratoni
Patrick Sheridan
Baadsvik Oystein

TRUMPET

Wynton Marsalis
Arturo Sandoval
Maynard Ferguson
Chris Botti
Bill Chase
Dizzy Gillespie
Wayne Bergeron
Allen Vizzutti
Chuck Mangione
Jens Lindemann

TUBA

Max Roach
Keiko Abe
Vic Firth
Lionel Hampton
Roy Ayers

Gerald Albright
Candy Dulfer
Charlie Parker
"Cannonball" Adderly
Johnny Hodges
Dr. Otis Murphy
Dr. Eugene Rousseau
Dale Underwood
Maceo Parker

ALTO SAX

PERCUSSION